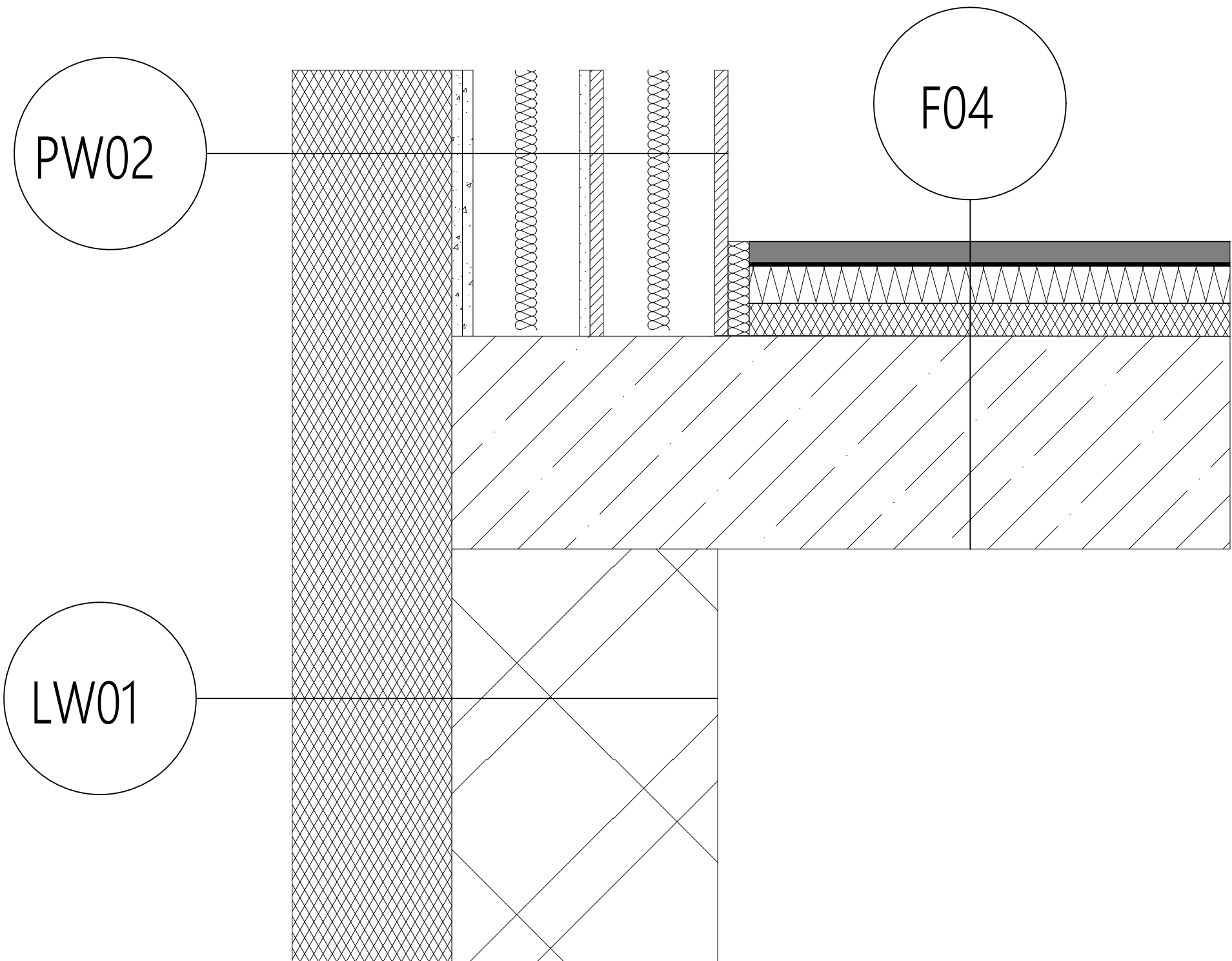


# DETAIL C - DETAIL OF PERIPHERAL WALLS FROM BOTH FLOORS



F04			
	SURFACE FINISH	Ceramic floor	8
	BINDING LAYER	Cement adhesive	5
	WATERPROOF LAYER	Hydro insulation paint layer	1
	SEPARATION LAYER	Separation layer - PE foil	1
	ACOUSTIC LAYER	Fermacell isolation	30
	THERMAL INSULATION	THERMAL INSULATION - polystyren EPS	35
	LOAD BEARING	Reinforced concrete	200
	PENETRATION LAYER	Penetration layer	1
	SURFACE FINISH	Plaster - indoor	10
LW01			
	SURFACE FINISH	Plaster - outdoor	10
	THERMAL INSULATION	THERMAL INSULATION - polystyren EPS	150
	BINDING LAYER	Cement adhesive	5
	LOAD BEARING	LOAD BEARING MASONRY WALL POROTHERM...	250
	PENETRATION LAYER	Penetration layer	1
	SURFACE FINISH	Plaster - indoor	10
PW02			
	SURFACE FINISH	Plaster - outdoor	10
	THERMAL INSULATION	THERMAL INSULATION - polystyren EPS	150
	SEPARATION LAYER	Separation layer - PE foil	1
	NON-LOAD BEARING	OSB board	25
	NON-LOAD BEARING	Plasterboard	13
	ACCOUSTIC LAYER	Acoustic isolation -mineral wool	100
	NON-LOAD BEARING	Plaster board	13
	SURFACE FINISH	Finish layer	5

0.000 = 395.100

m.a.s.l., B.H.S. / COORDINATE SYSTEM S-JTSK

COURSE	BACHELOR'S THESIS	<div><div>T</div><div>FAKULTA STAVEBNÍ ústav pozemního stavitelství</div></div>	
DRAWN BY	ŠIMON MADZIK		
SUPERVISED BY	Ing. JAN MÜLLER, Ph.D.		
INVESTOR	-		
LOCATION	PASOHLÁVKY, 691 22, PARCEL 3163/596		
PROJECT TITLE	GUESTHOUSE IN PASOHLÁVKY		
BUILDING OBJECT	BO 01 GUESTHOUSE IN PASOHLÁVKY		
PART	D.1.2 BUILDING STRUCTURAL SOLUTION	PAPER FORMAT	2xA4
DRAWING TITLE :	DETAIL C - DETAIL OF PERIPHERAL WALLS FROM BOTH FLOORS	DATE	10/2022
		PROJ. PHASE	DPS
		SCALE	1:5
		DRAWING NO.	